



# Understanding Disability in Tuvalu

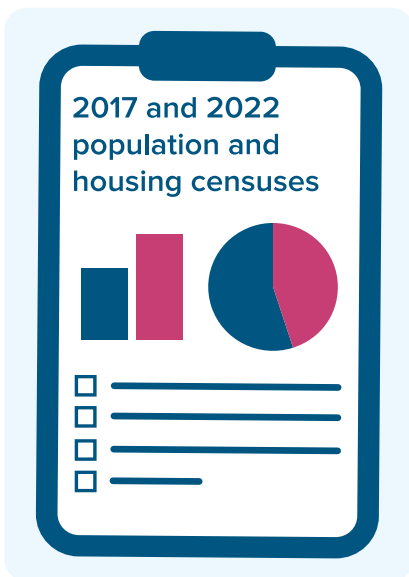
From the 2022 population and housing census  
**Easy Read summary**

## Easy Read version



This is an Easy Read version of key findings from the **Tuvalu disability monograph**.

This easy read version does not include all of the information, but it does share the important findings.



The Tuvalu disability monograph is an analysis of disability data collected during the 2017 and 2022 population and housing censuses.

A census is when you count all the people in a country and ask questions about things like:

- age
- work
- school
- employment

## **In this summary**

Persons with disabilities .....	3
Persons with disabilities in Tuvalu in 2022 .....	4
Disability by age group.....	5
Persons with disabilities: living conditions .....	6
Persons with disabilities: communication and internet use .....	8
Persons with disabilities: school attendance .....	9
Persons with disabilities: reading and writing literacy.....	10
Persons with disabilities: employment .....	11
Conclusion .....	12
Source of data.....	14

## Persons with disabilities

The 2022 population and housing census included questions from the Washington Group on disability statistics.

The Washington Group is an international expert group who have developed questions that provide a standard measure of disability.



The Washington Group’s short set comprises 6 questions that measures difficulty functioning in basic actions, such as **seeing, hearing, walking, remembering, self-care** and **communication**.

The response categories capture the functioning from mild to severe difficulties.

Unless otherwise noted, findings in this summary refer to persons aged 5 years and older.

For statistical purposes, the Washington Group recommend considering disability as having “a lot of difficulty” or “cannot do at all” for at least 1 of the 6 questions.

**People with "a lot of difficulty" or "cannot do at all" for at least 1 of the 6 questions will be considered as a person with disabilities.**

## Persons with disabilities in Tuvalu in 2022

Disability among the entire population:

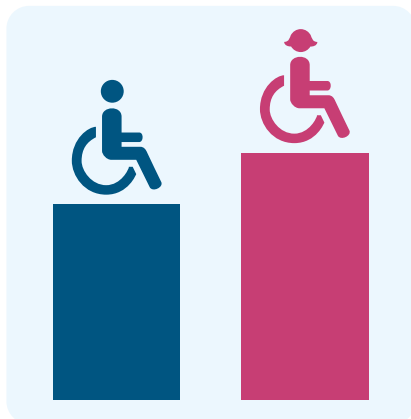


3 per cent of people aged 5 years and older had disabilities.

- 3 per cent means 3 out of 100 persons.
- 3 per cent represents 239 persons.

Difficulty with **walking** was the **most common type** of disability.

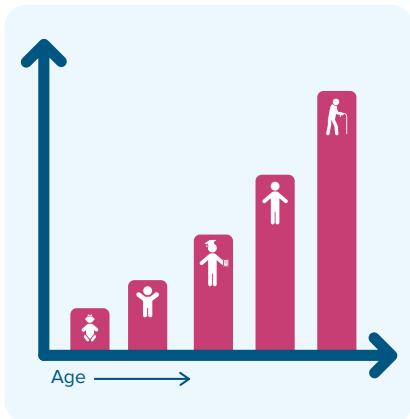
- 2 out of 100 persons had a lot of difficulties walking or cannot walk at all.



Females are slightly more likely than males to report having a disability.

- 3 out of 100 women and girls had disabilities.
- 2 out of 100 men and boys had disabilities.

## Disability by age group



Number of persons with disabilities increased with age.

Ageing can be associated with health conditions and risks.

In Tuvalu in 2022:

- 1 in 100 persons under 50 had disabilities.
- 6 in 100 persons aged 50 to 64 had disabilities.
- 16 in 100 persons over 65 years old had disabilities.

## Persons with disabilities: living conditions

Using information from the 2022 census, the poorest homes and housing conditions were identified.

The **wealth status** identifies the poorest homes by calculating certain household goods, assets and characteristics.



In Tuvalu, people aged 5 years and older with disabilities were more likely to live in the poorest households.

- 25 in 100 persons with disabilities lived in the poorest homes.
- 16 in 100 persons without disabilities lived in the poorest homes.

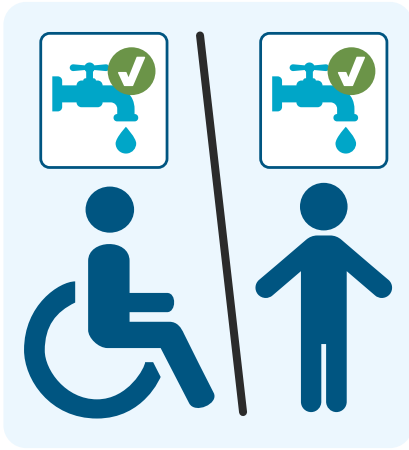


Persons with disabilities were more likely to live in homes with less access to **clean cooking fuels**.

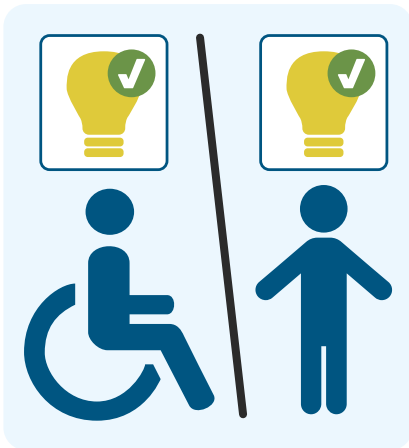
- 78 in 100 persons with disabilities had access to clean cooking fuels.
- 88 in 100 persons without disabilities had access to clean cooking fuels.

**Clean cooking fuels** are power sources that are safe for people and the environment.

They burn without making a lot of smoke, which helps protect health.



Persons with and without disabilities lived in homes that have the same access to safe water.



Persons with and without disabilities lived in homes that have the same access to clean electricity.

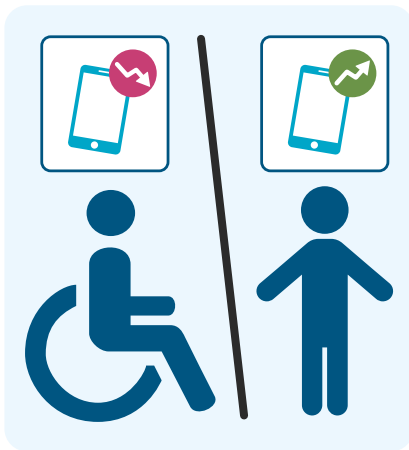


Persons with and without disabilities lived in homes that have the same access to **improved sanitation**.

**Improved sanitation** means having a toilet that is not shared with other homes and where wastes are treated in appropriate conditions.

## Persons with disabilities: communication and internet use

---



Persons with disabilities were less likely to have a phone.

- 19 in 100 persons with disabilities owned a mobile phone.
- 54 in 100 persons without disabilities owned a mobile phone.



Persons with disabilities were less likely to have access to internet.

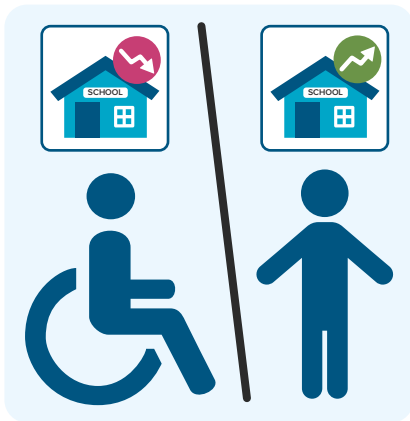
- 20 in 100 persons with disabilities had access to internet.
- 66 in 100 persons without disabilities had access to internet.

Not having a phone or internet access makes it harder for persons with disabilities to get important information, especially in an emergency.

Using online services can make life better for persons with disabilities. For example, they can use internet to learn and gain new skills.

## Persons with disabilities: school attendance

---



Persons with disabilities were less likely to have gone to school compared to those without disabilities.

- 68 in 100 persons with disabilities aged 5 years and older had been to school.
- 92 in 100 persons without disabilities aged 5 years and older had been to school.



Persons with disabilities who went to school often didn't reach high levels of education.

- 23 in 100 persons with disabilities reached post-secondary.
- 36 in 100 persons without disabilities reached post-secondary.

## Persons with disabilities: reading and writing literacy

---



Youth and adults with disabilities had low reading and writing skills in English.

Out of every 100 people aged over 15 years:

- 69 persons with disabilities could read and write in English.
- 95 persons without disabilities could read and write in English.

## Persons with disabilities: employment

---



Persons aged 15 years and older with disabilities were less likely to have a job.

- Only 8 in 100 persons with disabilities had a job.
- In comparison, 42 in 100 persons without disabilities had a job.



Not all people who have jobs are paid.

Persons with disabilities were less likely to have paid work.

- 6 in 100 persons with disabilities had paid work.
- 37 in 100 persons without disabilities had paid work.

Most persons with disabilities aged 15 years and older were not working. They were also not looking for a job:

- 91 in 100 persons with disabilities were not working and not looking for a job.
- 56 in 100 persons without disabilities were not working and not looking for a job.

## Conclusion

In 2022, fewer persons with disabilities in Tuvalu were employed.

Persons with disabilities had lower education levels.

Persons with disabilities were less literate than persons without disabilities.

These findings highlight that inclusive policies are needed support persons with disabilities to succeed.

Areas of life	Persons with disabilities	Persons without disabilities	Age group
<b>Education</b>			
Ever attended school	68%	92%	5+
Currently attending school	50%	77%	5–24
Literacy in English	68%	95%	15+
Primary education	11%	3%	15+
Secondary education	39%	55%	18+
Post-secondary education	23%	36%	25+
Vocational education	6%	9%	25+
Tertiary education	18%	26%	25+
<b>Economic activity</b>			
Labour force	9%	44%	15+
Unemployment	1%	3%	15+
Paid work	6%	37%	15+
Self-employment	3%	3%	15+
<b>Living conditions</b>			
Improved water	98%	99%	5+
Basic sanitation	94%	94%	5+
Clean cooking fuels	78%	88%	5+
Electricity (clean lighting source)	97%	98%	5+
Living in poorest households	25%	16%	5+
<b>Communication</b>			
Mobile phone ownership	19%	54%	15+
Internet access	20%	66%	15+
<b>Health and well-being</b>			
Tobacco use	16%	24%	15+
Alcohol consumption	3%	13%	15+

The previous table shows the difference between persons with disabilities and persons without disabilities for different areas of life. These differences are called gaps. To make Tuvalu fair and inclusive for everyone, these gaps need to be closed.

## Source of data

---



This summary shows information about people with and without disabilities using the **2022 Tuvalu population and housing census**.

Findings from the 2017 and 2022 Tuvalu population and housing censuses were used in the disability monograph.

The census is undertaken by Tuvalu Central Statistics Division, with the technical support of the Pacific Community (SPC).

Tuvalu conducts a census every 5 years.

The population and housing census captured individual and household information for people living in Tuvalu when data were collected.

This summary is designed to highlight areas for improvement for Tuvalu persons with disabilities.

It focuses on the proportion of the population aged 5 years or older with disabilities.