



# Social Statistics Release

Vital, Migration and Population Estimates

Release 2-2024

Central Statistics division – Collection & Surveys

## VITALS

### BIRTHS

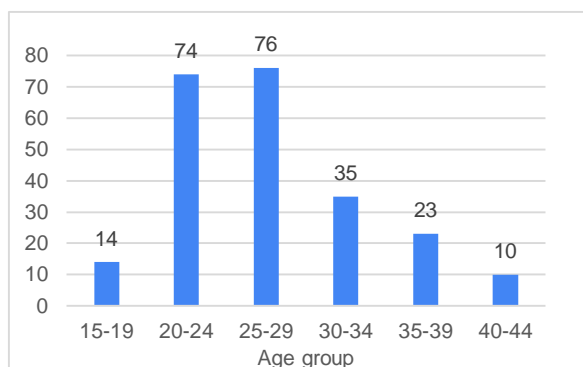


Figure 1: Births by age group of mothers, 2023

- The total number of births for 2023 was 232 which is a 13 percent decrease compared to the total births in 2022.
- The highest occurrence of births were mothers in the age group 25-29.
- The proportion of births by mothers between the age groups 15-19 to 25-29 is about 71 percent.

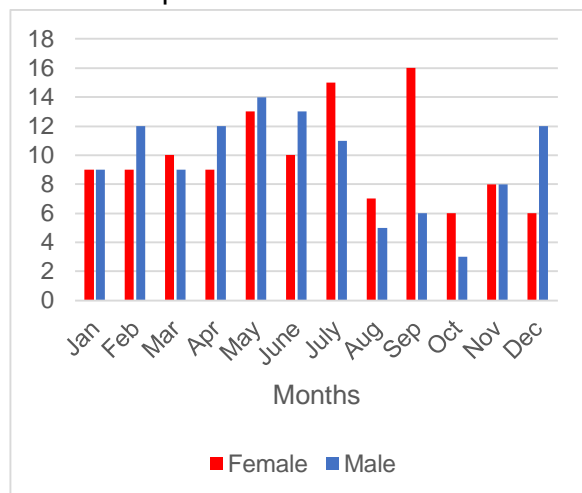


Figure 2: Births by sex of child and month, 2023

- Overall, births of female children are slightly higher than that of male children. About 96 males for every 100 births of female children in 2023 compared to 115 in 2022.
- The month with the highest incidence of births in 2023 was May compared to October in 2022.

## DEATHS

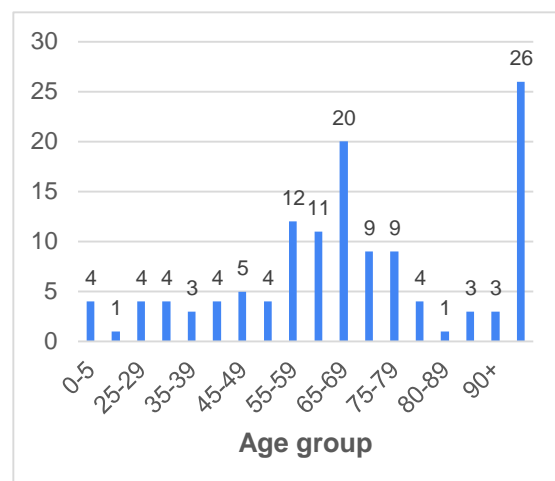


Figure 3: Deaths by age group, 2023

- The total number of deaths in 2023 was 127, a 55% increase from 2022.
- The highest incidence of deaths was in the age group 90+ seconded by the age group 65-69.

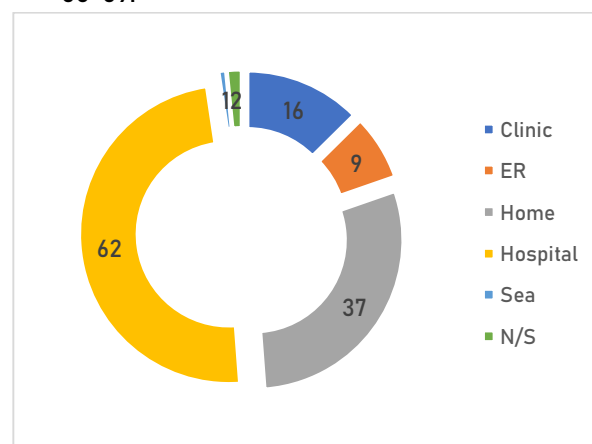


Figure 4: Deaths by place of occurrence, 2023

- Most deaths occur at the main hospital in Funafuti.
- About 1 in every 3 deaths occurred at home.
- There is no significant difference in the deaths of males and females in 2023.

## MIGRATION

### ARRIVALS

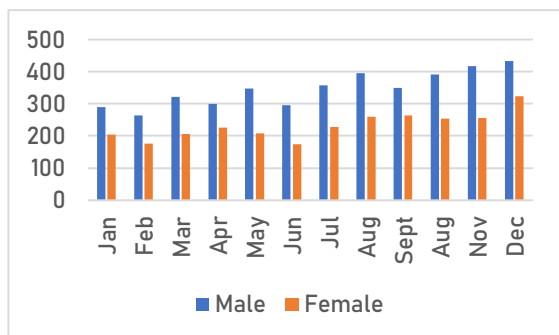


Figure 5: Total arrivals by month and sex, 2023

- Total arrivals for 2023 was 6,929, more than 3-fold (387 percent) of the total arrivals in 2022.
- The month with the highest arrivals was December.

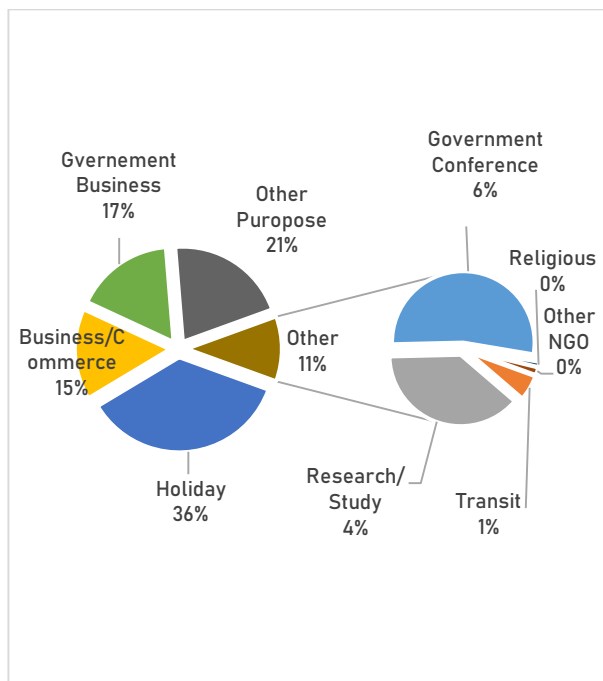


Figure 6: Visitors arrivals by purpose of visit, 2023

- The total number of visitors for 2023 was 3,136.
- Visitors increased 10-fold (1,185 percent) in 2023 compared to 2022. This increase is due to the lifting of travel restrictions in 2023.
- About 4 in every 10 visitors arrived for a holiday.

### DEPARTURES

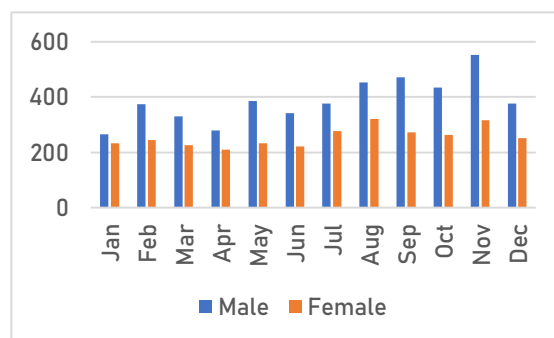


Figure 7: Total departures by month and sex, 2023

- Total departures for 2023 was 7,699, more than 3-fold (366 percent) of the total departures in 2022.
- The month with the highest departures was November.

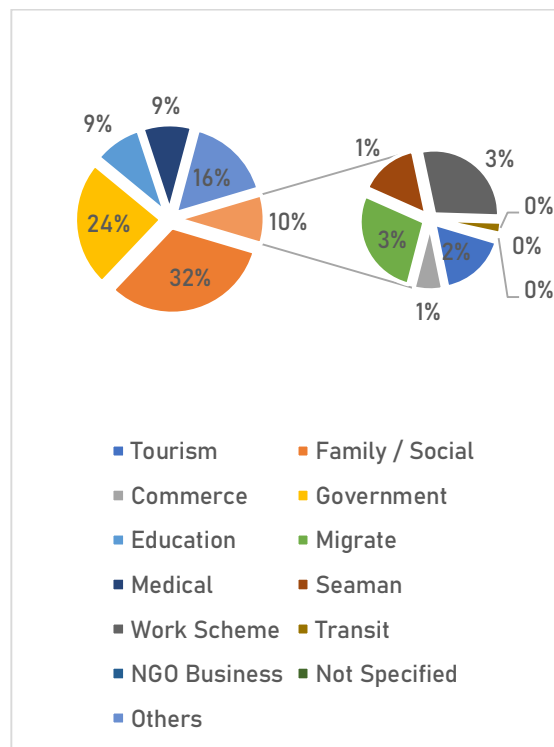


Figure 8: Resident departures by purpose of travel, 2023

- The total number of resident departures for 2023 was 4,490.
- Resident departures increased 2-fold (222 percent) compared to 2022. This is due to the lifting of travel restrictions in 2023.
- About 3 in every 10 residents traveled overseas for family or social purposes.

## POPULATION ESTIMATES

### METHODOLOGY

CSD uses migration and vital data to estimate the population for each year. The following is an overview of the process.

1. Cleaning of migration and vital data focusing on age, sex, and the event date<sup>1</sup>.
2. Calculate the net migration.
3. Calculate the net vital.
4. Starting with the population counts collected in 2017 as a base, the net migration and the net vital are added to the base to get the estimates for 2018.
5. The 2018 estimate is then used as a base when estimating the population for 2019.
6. This process is repeated until an estimate for 2023 is calculated.

### LIMITATIONS

The population estimate is only as reliable as the data used to calculate it. Below are a few things that are worth taking into consideration when using the population estimates.

1. There are missing data in the microdata used for the estimates and this is no exception for the variables (age, sex, and date of event) used in the calculations.
2. The data is not always complete meaning there may be some flights that were not entered due to missing arrival and departure forms or some births and deaths that were not recorded.
3. Compilation errors by the analyst may also influence the accuracy of the population estimates.

### SUMMARY

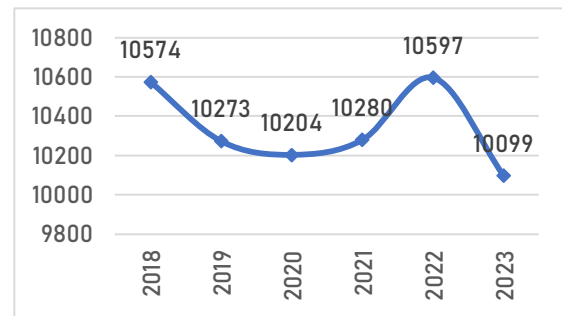


Figure 9: Resident population estimates, 2018 to 2023

- The population estimated for 2023 decreased by about 4.6 percent compared to the population estimated for 2022.
- It is worth noting from the section on migration that there was a significant difference in arrivals and departures which caused a decrease in the estimate.
- Furthermore, the increase in the estimate for 2022 can be due to the travel restrictions imposed due to the COVID-19 pandemic.
- The sex ratio for the 2023 estimates is 106 males for every 100 females.

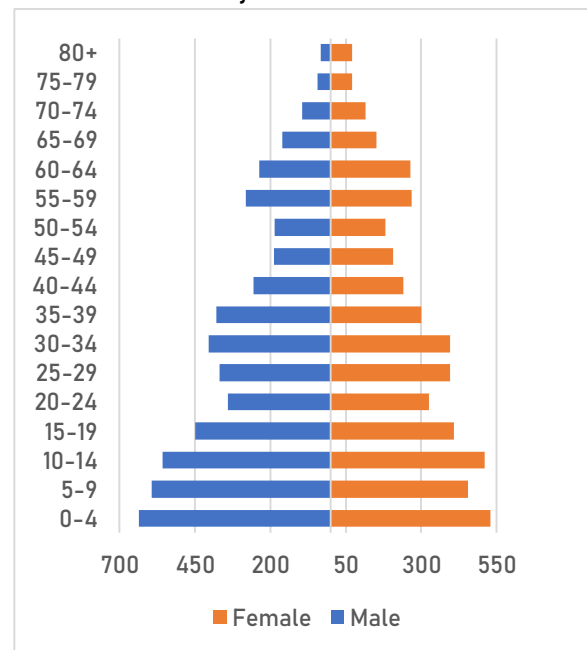


Figure 10: Pyramid for resident population estimates, 2023

<sup>1</sup> Event refers to an arrival, departure, birth, or death